

South Gloucestershire Landscape Character Assessment

Annex II: Strategic Viewpoints

South Gloucestershire Council

Final Draft Report for Adoption Chapter 29

Prepared by LUC

September 2024



Version	Status	Prepared	Checked	Approved	Date
1	Draft Method and Pilot	E White L Jewitt	K Davies	K Davies	03.04.2023
2	Draft Report	L Jewitt V Kakar	E White	K Davies	16.05.2023
3	Draft Report	E White L Jewitt	E White	K Davies	14.07.2023
4	Final Draft	E White L Jewitt	E White	K Davies	01.11.2023
5	Final Draft (updated following New Local Plan Phase 3 consultation)	L Jewitt	E White	K Davies	12.06.2024
6	Final Draft Report for Adoption	L Jewitt	E White	K Davies	11.09.2024



Land Use Consultants Limited

Registered in England. Registered number 2549296. Registered office: 250 Waterloo Road, London SE1 8RD. Printed on 100% recycled paper

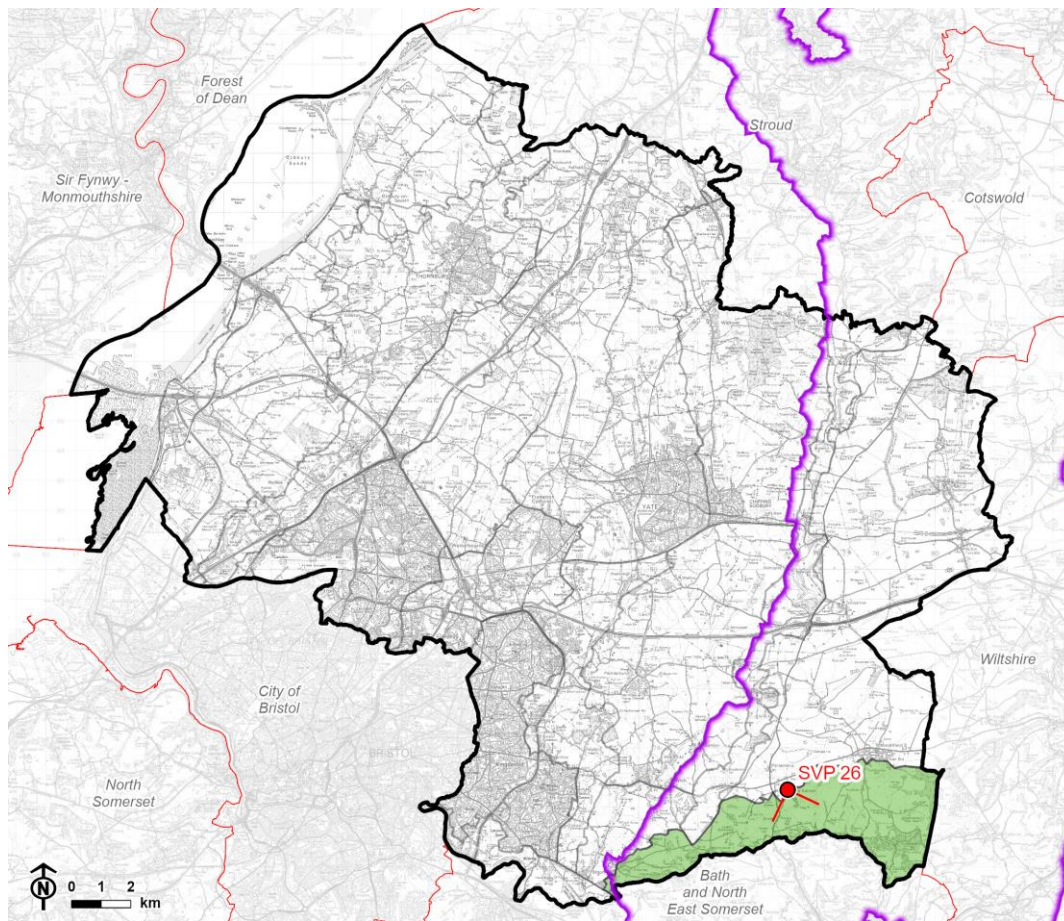
Contents

Chapter 29	216
Strategic Viewpoint 26: Cold Ashton	
Characteristics	221
Summary	222
References	223

Chapter 29

Strategic Viewpoint 26: Cold Ashton

Figure 29.1: Location of Strategic Viewpoint 26 and landscape character context

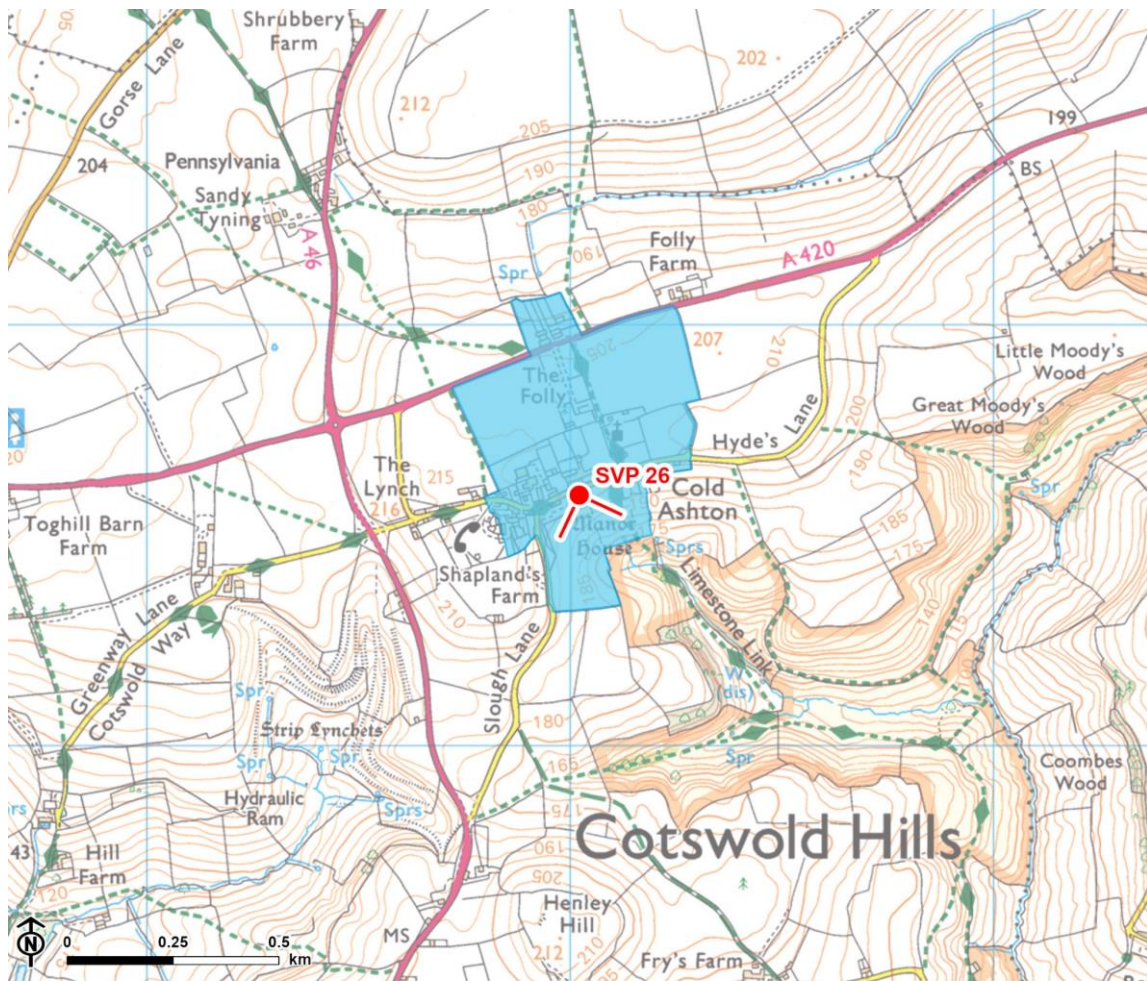


© Natural England copyright © Crown copyright and database rights, Ordnance Survey licence number 100023410 (2024).

CB:HS, EB:shayler, h LUC 12274_FiguresUpdates_MayJune2024 07/06/2024
Source: LUC, SGDC, NE, OS

-  Council boundary
-  Neighbouring local authority
-  Cotswolds National Landscape (AONB) boundary
-  LCA 3: Ashwicke Ridges
-  Strategic viewpoint and angle

Figure 29.2: Detailed map of the location of Strategic Viewpoint 26



© Natural England. © Historic England. Contains Ordnance Survey data © Crown copyright and database rights, Ordnance Survey licence number 100023410, 2024.

-  Council boundary
-  Cotswolds National Landscape (AONB) boundary
-  Conservation area
-  Strategic viewpoint and angle



Viewpoint Information

Grid reference: ST 75042 72624

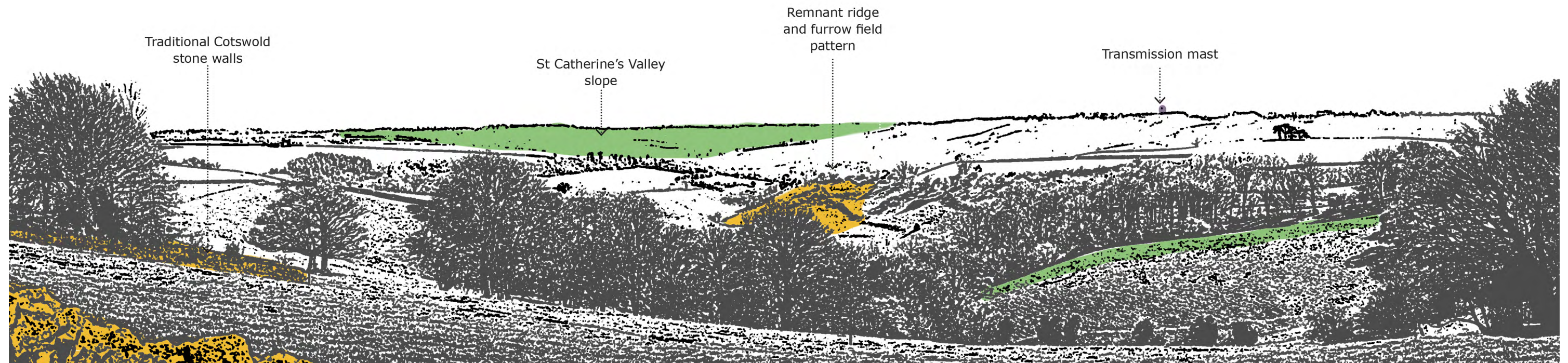
View location: Seating area on Hyde's Road/Cotswold Way, Cold Ashton.

View direction: Views south, east and west across St Catherine's Valley, part of LCA 3: Ashwicke Ridges .

Relationship with Visually Important Hillside (VIH): The viewpoint is located on the north-western edge of the Ashwicke Ridges VIH.

Experienced by: Residents on Hyde's Road, recreational users of The Cotswold Way National Trail, and transient views for cyclists and motorists travelling along Hyde's Road.

Figure 29.3: View Composition of Strategic Viewpoint 26



Traditional Cotswold
stone walls

St Catherine's Valley
slope

Remnant ridge
and furrow field
pattern

Transmission mast

Key landscape feature

Landmark / historic feature

Detractive feature

Figure 29.4: Full Panoramic Photograph of Strategic Viewpoint 26



Strategic Viewpoint 26: Cold Ashton



Strategic Viewpoint 26 (continued)

Characteristics

Popularity, access and facilities

- The viewpoint is referenced in the Cold Ashton Conservation Area appraisal, which states that there are “*magnificent views over...the steep St Catherine’s Valley to the South*” [See reference 1]
- Views from this viewpoint are representative of those described in LCA 2: Marshfield Plateau which states that from Cold Ashton there are “*Views of the surrounding landscape including into the valleys of the Ashwicke Ridges.*”
- The viewpoint is publicly accessible, located on Hyde’s Road, and on the route of The Cotswolds Way National Trail. It is close to The Limestone Link locally promoted route, which runs 85m to the east of the viewpoint, and can also be accessed via adjoining public rights of way LCA/13/10 to the north and LCA/17/10 to the south.
- Two benches and a litter bin are provided near the viewpoint to facilitate enjoyment of the view.

Relationship with the Cotswolds National Landscape (CNL)

- The viewpoint is located within the CNL and provides panoramic views across the undulating valleys of the Ashwicke Ridges.

Quality, value and features of the view

- An elevated viewpoint on the edge of the Ashwicke Ridges VIH and on the northern edge of the Marshfield plateau, providing panoramic views (180°) over the surrounding Ashwicke Ridges (characterised by its complex landform of rounded hills, steep sided ridges, and incised and broad valleys).

Chapter 29 Strategic Viewpoint 26: Cold Ashton

- The locally-prominent Henley Hill (1km away) forms a notable landscape feature on the horizon, along with the distinctive landform of the St Catherine's Valley.
- This is a strongly rural view with few detracting elements or modern built features. The presence of traditional cottages within Cold Ashton, as well as visible remnant medieval strip lynchet field patterns to the west invoke a sense of time depth.
- Located within the Cold Ashton Conservation Area, the viewpoint represents views experienced from the historic settlement, including from the Grade I listed Manor House.
- Two transmission masts form vertical features on what is otherwise an undeveloped skyline, slightly detracting from the overall composition of the view.

Summary

The Cold Ashton viewpoint is categorised as a SVP as it meets most of the criteria to some extent. It is a recorded viewpoint within the Cold Ashton Conservation Area Appraisal; it is noted in the South Gloucestershire Landscape Character Assessment as being a natural observation point from which to appreciate the landscape; it is located on a promoted footpath with benches and a litter bin facilitating enjoyment of the view; it allows appreciation of the Cotswold National Landscape and provides a notable view across the designated landscape; and it provides a panoramic view that takes in notable landscape features of the Ashwicke Ridges (including St Catherine's Brook Valley and Henley Hill), the Cold Ashton Conservation Area.

References

References

- 1 Cold Ashton Conservation Area Appraisal. Available at:
<https://beta.southglos.gov.uk/static/6fe38be9998b41c0c8a7716f6194a6f8/Cold-Ashton-1.pdf>

Report produced by LUC

Report produced by LUC

Bristol

12th Floor, Colston Tower, Colston Street, Bristol BS1 4XE

0117 929 1997

bristol@landuse.co.uk

Cardiff

16A, 15th Floor, Brunel House, 2 Fitzalan Rd, Cardiff CF24 0EB

0292 032 9006

cardiff@landuse.co.uk

Edinburgh

Atholl Exchange, 6 Canning Street, Edinburgh EH3 8EG

0131 202 1616

edinburgh@landuse.co.uk

Glasgow

37 Otago Street, Glasgow G12 8JJ

0141 334 9595

glasgow@landuse.co.uk

London

250 Waterloo Road, London SE1 8RD

020 7383 5784

london@landuse.co.uk

Manchester

6th Floor, 55 King Street, Manchester M2 4LQ

0161 537 5960

manchester@landuse.co.uk

landuse.co.uk

Landscape Design / Strategic Planning & Assessment

Development Planning / Urban Design & Masterplanning

Environmental Impact Assessment / Landscape Planning & Assessment

Landscape Management / Ecology / Historic Environment / GIS & Visualisation